

HONOBLETM

Precision Parts Manufacturing &
Specialty Fasteners Specialist

精密零件制造商 & 特殊紧固件专家



About Us

Honoble is dedicated to the OEM of all kind of precision metallic and plastic components and the development, production of engineering fasteners.

鸿锦公司致力于各种精密金属及塑胶零件的来图来样加工，以及特殊工程紧固件的开发和生产，以及其他类新产品如iPhone配件的开发制造。

Honoble grows up from a humble workshop into a group company which is capable of CNC Turning, CNC Milling, Autolathe Turning, die Casting, Cold Heading, Injection Molding, Stamping as well as the development and fabrication of toolings and moulds. Right now we are serving clients in different industries like Communication, Automation, Sports, Aerospace, Medical Care, Automotive, Consumer Electronics, spreading all over the world.

公司从最初的小工场经过多年不懈努力终于成长为一家具备多样加工能力和工程能力的公司，目前我们的加工能力包括CNC车床加工、CNC铣削加工、自动车床加工、压铸、打头、注塑成型等，公司立足于珠三角地区，服务大中华区以及世界各地的客户。这些客户分布于通信、自动化、航空、医疗、汽车、消费电子等行业，我们服务的知名企业有中兴、比亚迪、金立等。

Besides our OEM capability, we also stress our competency on the fastener design and production. For many years, the fasteners are our continuous business and regarded as our important and competitive products. Most of our fasteners are the threaded inserts, which are widely used in the plastics, metals, stamping parts, PCB, woods. We combine the knowledges learning from fastener giants and our own experience, know-how and form our own fastener systems. Our Threaded Inserts fasteners represent top quality in China.

除了做OEM外，我们非常强调我们在一些特殊工程紧固件上的设计和制造能力，多年来我们给紧固件巨头代工、为OEM大厂提供金属钣金、塑胶注塑、线路板组装之用的各类紧固件。如今我们有能力为客户量身定制新的紧固件产品，也形成了我们自己的一系列标准产品。尤其在塑胶上用的各种铜嵌件、金属厚板上用的自攻螺套产品上，我们代表了最高的品质和服务。

From the beginning to ever, we sticks to providing high quality products and services to our customers , we sticks to learning from our customers and vendors and our employees, we sticks to be professional, trustable and responsible. We recognize the importance of R&D, Quality, and never stop to improve.

从始至终，公司致力于提供高品质的产品和服务给广大客户带来价值，我们坚持向客户、供应商和员工那里学习，不断进步。我们重视研发和技术积累，我们专业、负责，值得信赖！



Manufacturing Capability

Honoble is based on the precision turning and milling, and extend, integrate the manufacturing capability to meet the customer needs and company growing strategy. Through investiong, we are able to do injection molding and stamping right now.

鸿锦公司立足于精密车削和铣削加工，并且应客户需求以及自身发展战略需要，整合、扩展自身的加工范围和能。通过投资其他公司，我们的生产能力拓展到了塑胶注塑加工以及冲压加工。

CNC Turning: OD ϕ 0.5~300mm, Length 0.5~1,000mm, precision \pm 0.005, milling capability supported

Autolathe Turning: OD ϕ 0.5~15mm, precision \pm 0.01mm

CNC Milling: 3-axis and 4-axis, X800 Y600, precision \pm 0.05mm

Grinding: precision \pm 0.0025mm

Die Casting: 30T~420T

数控车削: 外径 ϕ 0.5~300mm, 长度0.5~1,000mm, 精度 \pm 0.005, 支持车铣符合加工

自动车床车削: 外径 ϕ 0.5~15mm, 精度 \pm 0.01mm

数控铣削: 三轴, 四轴加工, X800 Y600, 精度 \pm 0.05mm

外圆磨: 精度 \pm 0.0025mm

压铸: 30T~420T



Working Materials

Ferrous Material: Carbon Steel like 1214, 1215, S45C; Stainless Steel SUS303, SUS304, SUS316, SUS416, SUS420F, 420J2 and other ferrous materials like bearing steel, music wire, high carbon steels.

Non-ferrous Material: Copper Alloy C11000, Brass C3604/C3602, Beryllium Copper C17200/C17300 etc

Aluminum Alloy 6061-T6, 2024-T3, 7075-T6

Plastics: PVC, POM, PA, Mac Nylon, PTFE(Teflon)

Specialty Alloy: Kovar (ASTM F-15/UNS K94610), Invar (UNS K93600/1.3912), 42 Alloy etc.

工作材料

铁基材料: 碳钢如1214,1215,S45C; 不锈钢SUS303,SUS304,SUS316以及SUS416,SUS420F/420J2以及其他如轴承钢、高碳钢等。

非铁基材料: 铜合金如C11000,黄铜C3604/C3602,铍铜C17200/C17300等; 铝合金6061-T6, 2024-T3,7075-T6以及塑胶材料如PVC, 赛钢, 尼龙, 铁氟龙等。

特殊合金: 主要是铁镍合金如可伐4J29, 因瓦4J36等。

Quality

Our long term operation lives on the good quality and services.

公司的永续经营需要以良好的品质和服务为基石。

Quality System

The quality system follows the ISO 9001: 2008 and certified, we hear customers voices and manage to meet their requirements. From the product development to IQC to IPQC to FQC, every stage are under control.

公司依据ISO 9001:2008建立品质系统并严格执行。我们聆听客户的声音并努力达成客户品质目标。从新产品开发到来料检验、制程检验再到最终检验，我们要求员工积极参与、严格管控。

Inspection Facility

Our QC personnel employ advanced and suitable inspection tools and equipments to perform quality test and verification. These quality tools include Projector, CMM, Roughness Tester, Altitude Indicator, Durometer, Micrometer, Caliper, all kinds of Gauges, and Salt Spray Testers, etc.

品质人员使用先进的并且是适合的检测工具和设备来做品质测试和品质验证。这些设备包括投影仪、三次元、面粗度仪、高度计、硬度计、千分尺、游标卡尺、各种量规以及盐雾试验机。



Projector



CMM



Roughness Tester



Altitude Indicator

Engineering

We never define us as a pure OEM factory, we are active in attending customer project development, positive in developing new technical skills and products and zealous in solving customer application issues regarding the insert fasteners. And we are able to develop toolings and moulds.

我们从不把自己定义为单纯的代工厂，我们积极参与客户项目开发、积极探索新的技术技巧、热心于帮客户解决紧嵌件紧固件的现场应用问题。并且，我们具备五金模具、塑胶模具的开发能力。

Precision Turning

Honoble started its business as an autolathe turning workshop, all the way we take the turning as our basic and the most important machining capability. We have cam-based auto lathes and CNC lathes more than 50 sets, and other machines like drilling machines, general milling machines, grinding machines, table lathes, slotters, cutters etc work for auxiliary processes. Our swiss-type autolathes are capable of very slim precision parts, and the Japan imported swiss-type CNC lathes are capable of compound machining of very long and complicate shafts.

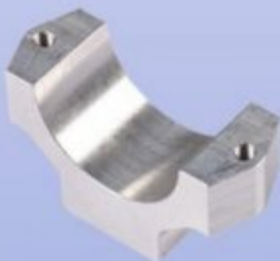
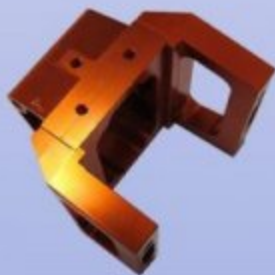
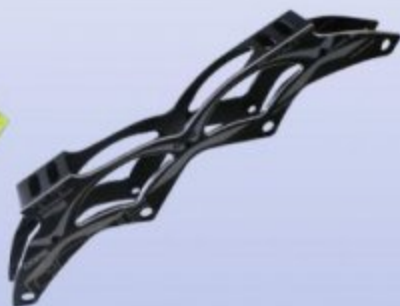
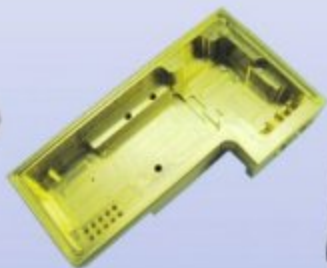
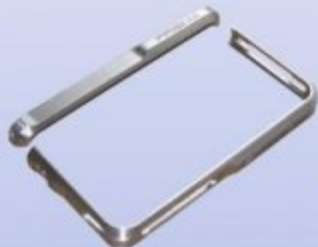
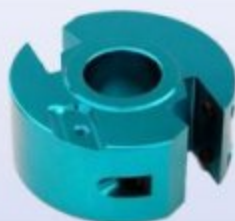
我可以自动车床加工开始，自始至终将车削加工作为我们扩展和延伸的基石。目前公司有自动车床和数控车床50多台，并配备有各类二次加工设备如钻床、铣床、磨床、桌上车床、开槽机、锯床等。我们的走芯自动车床可以加工非常细小的零件，而日本进口的数控走芯机则可以加工非常长的精密轴零件做车铣复合加工。



CNC Milling & Die-casting

Our CNC Machining Centers are working on different non-circular parts, combining our die-casting machines, we provide great feasibility and cost effectiveness for our customers. Mainly our CNC Machining Centers process Aluminum Alloys and Coppers, but other materials like Stainless Steel 304L, POM, and Kovar are workable.

加工中心加工各类非圆型零件，结合我们的压铸机，在各类腔体和复杂结构件的生产上有很大的灵活性和成本优势。主要针对的材料为铝合金和钢材，但是其他材料如不锈钢304L，POM，可伐都是可以胜任的。



Threaded Inserts for Plastics

Those inserts are for use in thermoplastics or thermosetting plastics, they may be installed by heat staking, ultra-sonic, cold press-in, insert molding or self-tapping depending on their features and specific applications

这些嵌件适用于热塑性或热固性塑胶产品，根据其各自不同的特性和具体应用，可能热熔埋植、超音波埋植、冷压、模内注塑或者自攻嵌入。



Fasteners for PCBA

Well understanding the needs of fasteners for PCB assembly, we design and manufacture self-broaching and surfacemount fasteners like standoffs, spacer, nuts, etc.

基于电路板组装需求，我们开发并生产压铆类和表面安装类的支撑柱、间隔柱、螺母等产品。



Inserts for Metals & Woods

Those inserts, include self-tapping inserts, wire inserts, keysets and cold press-in inserts, are for use in thick cast metallic articles, toolings and tools , soft woods, hard woods.

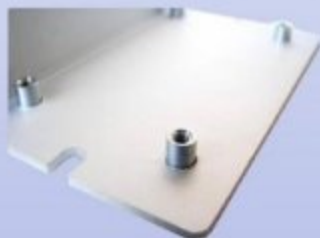
这些嵌件包括自攻螺套、钢丝螺套、插销螺套以及冷压嵌件，主要用于压铸件，模具零件以及软木、硬木。



Fasteners for Sheet Metals & Panels

The fasteners for sheet metals and panels are made per industrial standards, most of them are self-clinching fasteners. Besides standard ones, we also design and produce non-standard fastener for customer specific applications.

这些用于钣金和金属面板的紧固件基本是依据行业标准来生产的，并且基本上都是压铆紧固件。除了标准件外，我们也为客户设计定制非标紧固件。



Rivet Nuts

Rivet nuts are low cost, easy to install and reliable. They are widely used for assembly of plates, cabinets, brackets and closures.

拉铆螺母易于使用并且成本低廉，被广泛用于面板、箱柜、托架和箱体的组装。



Other Fasteners

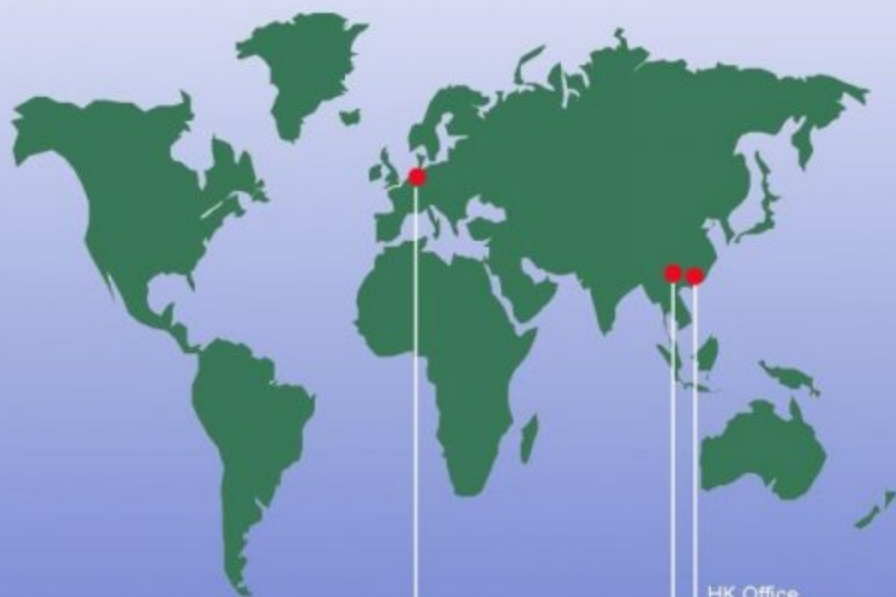
We also produce precision screws, nuts and solid pins and other fastener that may be standard or custom fasteners. The smallest screw we can produce is M0.8 or equivalent.

除了上面各类快件外，我们公司还生产精密螺丝、螺母，精密销钉以及其他标准或者非标紧固件。目前我可最小的螺丝可以做到M0.8。



HONOBLE is your long term partner !

鸿锦是您的长期合作伙伴！



Europe Office

Euro@honoble.com
Tel: 0031 0645301965

China Headquarter

sales@honoble.com
Tel: 0086-755-27737370

HK Office

hk@honoble.com
Tel: 00852-29679555

Honoble Precision (China) Manufacturing Co., Ltd
鸿锦精密(中国)制造有限公司